



## 3B MAXXIGLOSS & MAXXIMATT High Gloss & Matte Panels

MDF Boards laminated with a hard coated scratch resistant surface for furniture applications. Choose a High Gloss or Super Matte finish.

- Panels:**
- All panel orders to be delivered freight ppd.
  - Orders received by noon Friday will be delivered the following Tues/Wed.

- Custom Doors:**
- 5-7 business days for delivery upon receipt of signed order confirmation.
  - \$ 1500 freight ppd.
  - Flat \$ 125 delivery fee for orders under \$ 1500.

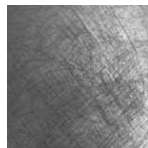
### • High Scratch Resistance

The surface is tested with the Martindale Microscratch testing machine which is performing 160 rubs on the surface of the material with nylon/alumina abrader material. The surface of MAXXIGLOSS is rated level 5 (best result).

Surface Assessment after 160 rubs:



**MAXXIGLOSS®**  
Gloss Level before test = 92  
Gloss Level after test = 89  
LOSS OF GLOSS UNITS = 3



**UV LACQUERED MELAMINE**  
Gloss Level before test = 89  
Gloss Level after test = 40  
LOSS OF GLOSS UNITS = 49

### • High Chemical Resistance

The surface is tested according to the most demanding requirements and it fulfills the highest resistance required for the furniture industry.

### • Phthalates Free

### • FSC MDF

Certified by Forest Steward Council

### • PVC Free & REACH Compliant

### • Low VOCs

## MAXXIGLOSS

- Extremely Flat Glossy and Mirror like surface
- High Scratch resistance
- No Orange peel effect
- High chemical resistance against liquids, detergents, stains



Super high gloss (over 92 gloss), non-PVC plastic laminate with special surface treatment to enhance scratch resistance and chemical resistance. Applied to MDF panels or fiberboard using 1D technology, it is ideal for the production of components for the kitchen, bedroom, bathroom or living room.

## MAXXIMATT

- Extremely Matte and Soft Touch Effect
- High Scratch resistance
- High chemical resistance against liquids, detergents, stains



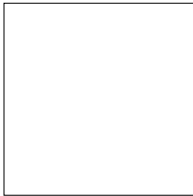
Super high opacity (5 gloss), non-PVC plastic laminate with special surface treatment to enhance scratch resistance and chemical resistance. It is applied to MDF panels or fiberboard using 1D technology. Special sensorial characteristics, thanks to soft, velvety touch surface with 'no fingerprint' effect.



**Color Samples / Pricing**

**MAXXIGLOSS: High Gloss Finish**

White 8380Z



Item	Net
Panel (110" x 48" x 18mm)	\$ 179.00
Skin (110" x 48" x 1mm)	175.00
Edgebanding .5mm thick (328')	70.35
Edgebanding 1.5mm thick (492')	205.11

Mocaccino 8570Z



Item	Net
Panel (110" x 48" x 18mm)	\$ 199.00
Skin (110" x 48" x 1mm)	199.00
Edgebanding .5mm thick (328')	94.19
Edgebanding 1.5mm thick (492')	205.11

Grey 8240Z



Item	Net
Panel (110" x 48" x 18mm)	\$ 199.00
Skin (110" x 48" x 1mm)	199.00
Edgebanding .5mm thick (328')	94.19
Edgebanding .7mm thick (328')	114.80

Dark Ebony 8540Z



Item	Net
Panel (110" x 48" x 18mm)	\$ 210.00
Skin (110" x 48" x 1mm)	-
Edgebanding .5mm thick (328')	94.19
Edgebanding 1.5mm thick (492')	205.11

Red 8470Z



Item	Net
Panel (110" x 48" x 18mm)	\$ 205.00
Skin (110" x 48" x 1mm)	-
Edgebanding .5mm thick	-
Edgebanding 1.5mm thick (492')	205.11

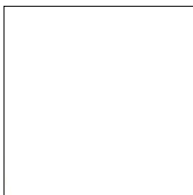
Black 8220Z



Item	Net
Panel (110" x 48" x 18mm)	\$ 189.00
Skin (110" x 48" x 1mm)	199.00
Edgebanding .5mm thick (328')	94.19
Edgebanding 1.5mm thick (492')	205.11

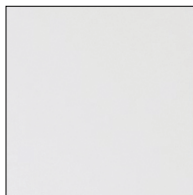
**MAXXIMATT: Super Matte Finish**

White 8420Z



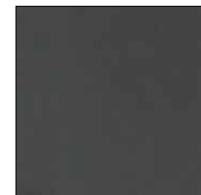
Item	Net
Panel (110" x 48" x 18mm)	\$ 179.00
Skin (110" x 48" x 1mm)	195.00
Edgebanding .5mm thick	-
Edgebanding 1.5mm thick (492')	205.11

Mocaccino 8590Z



Item	Net
Panel (110" x 48" x 18mm)	\$ 189.00
Skin (110" x 48" x 1mm)	199.00
Edgebanding .5mm thick	-
Edgebanding 1.5mm thick (492')	205.11

Black 8430Z



Item	Net
Panel (110" x 48" x 18mm)	\$ 189.00
Skin (110" x 48" x 1mm)	199.00
Edgebanding .5mm thick	-
Edgebanding 1.5mm thick (492')	205.11

Prices Shown are Net



Ph: 415-552-5500  
 Fax: 415-552-5840  
 orders@macmurraypacific.com

**3B Panel/Door Order Form**

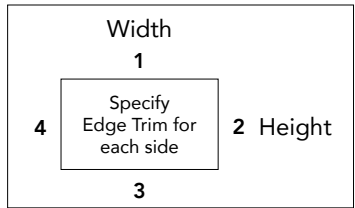
Order       Quote

Company \_\_\_\_\_ Contact \_\_\_\_\_ PO# \_\_\_\_\_

Address \_\_\_\_\_ Phone \_\_\_\_\_ Fax \_\_\_\_\_

City \_\_\_\_\_ State/Zip \_\_\_\_\_ Email \_\_\_\_\_

<input type="checkbox"/>	<b>MAXXIGLOSS</b>
<input type="checkbox"/>	<b>MAXXIMATT</b>



<b>Edge Banding</b>	Qty	Color

#	Qty	Width	Height	Door Color	Edge 1	Edge 2	Edge 3	Edge 4
1								
2								
3								
4								
5								
6								
7								
8								
9								
10								
11								
12								
13								
14								
15								
16								
17								
18								
19								
20								

Signature \_\_\_\_\_ Date \_\_\_\_\_



**3B S.p.A.**  
 via delle Industrie,1 - 31040 SALGAREDA (TV) - ITALIA  
 phone: +39 0422747053 - fax: +39 0422807594  
 teleconference: +39 0422807027  
 web site: www.3bspa.com - e-mail: 3bspa@3bspa.com  
 COD. FISC.: 01749830269 - PARTITA IVA: IT 01749830269  
 C.C.I.A.A. di TREVISO: R.E.A. 166628 - R.I. 01749830269  
 CAPITALE SOCIALE: € 516.000 i.v.



# MAXXIGLOSS® HIGH SCRATCH RESISTANT HIGH GLOSS BOARDS

Issued: 22nd August 2013



## MARTINDALE ABRASION AND SCRATCH RESISTANCE TEST

(ISO 12947-1)

### SCOPE:

Assessment of the surface resistance to micro scratching relating to the rigid surfaces of finished furniture.

### TESTING PARAMETERS:

NUMBER OF CYCLES = 160 CYCLES

APPLIED LOAD = 4 N (413 GRAMS)

ABRADER MATERIAL = SCOTCH-BRITE 7440

*(nylon web with alumina abrasive)*

### TEST PROCEDURE:

The testing machine is performing 160 rubs on the surface of the tested material. After finishing, the material is removed and a visual assessment is performed in evenly diffused artificial daylight at viewing distance of 0,5 m.



## SURFACE ASSESSMENT AFTER 160 RUBS



### MAXXIGLOSS®

GLOSS LEVEL BEFORE TEST = 92

GLOSS LEVEL AFTER TEST = 89

**LOSS OF GLOSS UNITS = 3**



### ACRYLIC HIGH GLOSS

GLOSS LEVEL BEFORE TEST = 90

GLOSS LEVEL AFTER TEST = 7-10

**LOSS OF GLOSS UNITS = 80**



### PET HIGH GLOSS

GLOSS LEVEL BEFORE TEST = 88

GLOSS LEVEL AFTER TEST = 7-12

**LOSS OF GLOSS UNITS = 76**

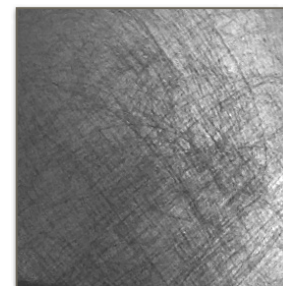


### PVC HIGH GLOSS

GLOSS LEVEL BEFORE TEST = 88

GLOSS LEVEL AFTER TEST = 7-12

**LOSS OF GLOSS UNITS = 76**



### UV LACQUERED MELAMINE

GLOSS LEVEL BEFORE TEST = 89

GLOSS LEVEL AFTER TEST = 40

**LOSS OF GLOSS UNITS = 49**

*\*gloss units measured at 60 degrees angle*