



Sales Bulletin
July 2018

Shelfology

Concealed Floating Shelf Brackets

Concealed Heavy Duty Floating Shelf Brackets



2 Rod



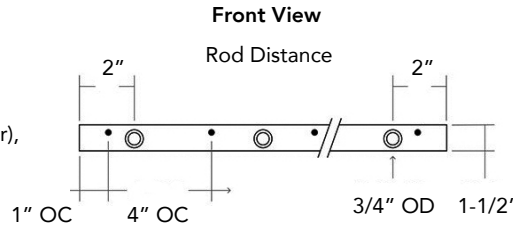
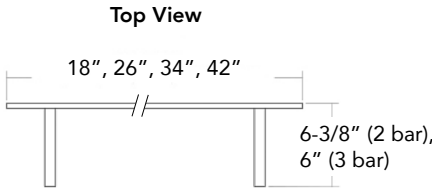
3 Rod

Fits Hollow & Solid Floating Shelf

- Supports shelves from 7" to 14" deep
- Fits shelves 2" thick or more
- Support up to 45 lbs. per rod

Bracket Specs

- 1/4" thick steel back bar
- 360° welds
- Screw holes are set 1" OC from each end and continue 4" OC down the length of the bracket
- Countersunk screw holes are 3/16" OD
- Rods are set 2" OC from each end, 3/4" dia.



2 Rod	Length	Load Cap	List/ea
1806BL-2	18"	90 lbs.	\$ 103.36
2606BL-2	26"	90	123.52

3 Rod	Length	Load Cap	List/ea
3406BL-3	34"	135	143.68
4206BL-3	42"	135	164.00

* Does not include shelf or screws

Concealed Heavy Duty Brackets

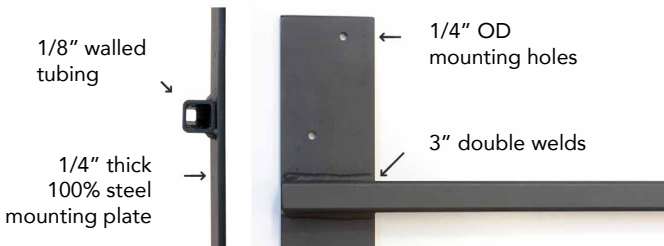


Fits Hollow Slabs, Solid Beams & Aproned Surfaces

- Up to 18" Deep & Any Length
- Supports mantel, shelves and desks from 9" to 24" deep
- Fits materials 1-1/2" to 4" thick

Bracket Specs

- 3/4" steel square tube
- Mounts to side of stud
- Mounting plate is 1/4" thick x 12" long x 3" wide, hot-rolled steel
- Screw holes are 1/4" OD, ideal for high strength 1/4" lag bolts



Code	Rod Length	Load Cap	List/ea
3406BL	6"	68 lbs.	\$ 55.00
3410BL	10"	55	64.16
3414BL	14"	50	73.34

* Does not include shelf or screws

1 ea = 50% 10+ = 50/15